

Projector 150™

American DJ®



User Instructions

American DJ
6122 S. Eastern Ave.
Los Angeles Ca. 90040
www.americandj.com

Rev 1/09

Projector 150™

Introduction

Introduction: The American DJ® Projector 150™ is a truly unique lighting product. This unit can be used to create three different types of effects when used with optional attachments. The unit ships with four useful projection slides to project different patterns on a wall or flat surface. Customized patterns may be made at home using your computer, printer, and transparencies. The optional 35mm slide attachment allow you to project a standard 35mm slide. The optional oil wheel allows you to use the projector as a liquid oil lamp.

Customer Support: American DJ® provides a toll free customer support line, to provide set up help and to answer any question should you encounter problems during your set up or initial operation. You may also visit us on the web at www.americandj.com for any comments or suggestions. For service related issue please contact American DJ®. Service Hours are Monday through Friday 9:00 a.m. to 5:00 p.m. Pacific Standard Time.

Voice: (800) 322-6337

Fax: (323) 582-2610

E-mail: support@americandj.com

To purchase parts online visit <http://parts.americandj.com>

Warning! To prevent or reduce the risk of electrical shock or fire, do not expose this unit to rain or moisture.

Caution! There are no user serviceable parts inside this unit. Do not attempt any repairs yourself, doing so will void your manufactures warranty. In the unlikely event your unit may require service please contact American DJ.

PLEASE recycle the shipping carton when ever possible.

Projector 150™

Unpacking

Unpacking: Every Projector 150™ has been thoroughly tested and has been shipped in perfect operating condition. Carefully check the shipping carton for damage that may have occurred during shipping. If the carton appears to be damaged, carefully inspect your units for any damage and be sure all accessories necessary to operate the system have arrived intact. In the event damage has been found or parts are missing, please contact our toll free customer support number for further instructions. Please do not return the system to your dealer without first contacting customer support.

©American DJ Supply® - www.americandj.com - Projector 150™ Instruction Manual Page 2

Projector 150™

Precautions

Reset Breaker:

To reset the breaker, push the breaker button in until you hear it pop back in to place. If the breaker continues to pop, stop using the unit and contact customer support the unit may require service.

- To reduce the risk of electrical shock or fire, do not expose this unit rain or moisture
- Do not spill water or other liquids into or on to your unit
- Be sure that the local power outlet match that of the required voltage for your unit
- Do not attempt to operate this unit if the power cord has been frayed or broken. Do not attempt to remove or break off the ground prong from the electrical cord. This prong is used to reduce the risk of electrical shock and fire in case of an internal short
- Disconnect from main power before making any type of connection
- Do not remove the cover under any conditions. There are no user serviceable parts inside
- Never plug this unit in to a dimmer pack
- Always be sure to mount this unit in an area that will allow proper ventilation. Allow about 6" (15cm) between this device and a wall
- Do not attempt to operate this unit, if it becomes damaged
- This unit is intended for indoor use only, use of this product outdoors voids all warranties
- During long periods of non-use, disconnect the unit's main power
- Always mount this unit in safe and stable matter
- Power cords should be routed so they are not likely to be walked on, pinched by items placed upon or against them.
- Cleaning -The fixture should be cleaned only as recommended by the manufacturer. See page 7 for cleaning details
- Heat -The appliance should be situated away from heat sources such as radiators, heat registers, stoves, or other appliances (including amplifiers) that produce heat.
- The fixture should be serviced by qualified service personnel when:
 - A. The power-supply cord or the plug has been damaged.
 - B. Objects have fallen, or liquid has been spilled into the unit.
 - C. The unit has been exposed to rain or water.
 - D. The appliance does not appear to operate normally or exhibits a marked change in performance.

Projector 150™

General Instructions

To optimize the performance of this product, please read these operating instructions carefully to familiarize yourself with the basic operations of this unit. These instructions contain important safety information regarding the use and maintenance of this unit. Please keep this manual with the unit, for future reference.

Projector 150™

Features

- Includes Built-In Hanging Yoke
- Includes Four Transparencies
- Easy Access Lamp Replacement
- Optional 35mm Adaptor
- Optional Oil Wheel Attachment
- Fully Focusing
- ZB-FCS 24v/150w, 50hrs.

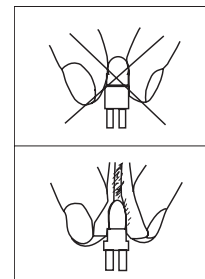
Projector 150™

Warranty Registration

The Projector 150™ carries a one year (365 days) limited warranty. Please fill out the enclosed warranty card to validate your purchase. All returned service items whether under warranty or not, must be freight pre-paid and accompany a return authorization (R.A.) number. The R.A. number must be clearly written on the outside of the return package. A brief description of the problem as well as the R.A. number must also be written down on a piece of paper and included in the shipping container. If the unit is under warranty, you must provide a copy of your proof of purchase invoice. You may obtain a R.A. number by contacting customer support at (800) 322-6337.

Projector 150™

Halogen Lamp Precautions



Halogen Lamp Warning: This fixture is fitted with halogen lamps which are highly susceptible to damage if improperly handled. Never touch the lamps with your bare fingers as the oil from your hands will shorten lamp life. Also, never move the fixture until the lamps have had ample time to cool. Remember, lamps are not covered under warranty conditions.

Projector 150™

Operation

Introduction: The Projector 150's wheel will rotate slowly making a unique, vibrant effect that produces a multi-colored and multi-textured effect. For best results, shine on a light colored wall or ceiling (or any surface). Adjust focusing lens to desired effect. Use an American DJ® high quality mobile pro fog machine.

Operating Instructions: This unit has been fitted with a lamp at the factory and is ready to go. Plug the unit into a matching power outlet. Motor rotation will start when unit is plugged in. For best results, shine on a light colored wall or ceiling (or any surface). Adjust focusing lens to desired effect. Use an American DJ® high quality mobile pro fog machine or other special effects smoke to enhance the beams. This will make the colored beams of light more visible and enhance the overall effect.

Mounting: When used with included mounting bracket, this unit may be mounted in any safe position or set on a flat stable surface.

Caution! Be sure not to obstruct cooling vents and keep this unit in a well ventilated area. Never open the unit while in use. Avoid touching the lamps, the lamp will get extremely hot under normal usage and may cause serious injury.

Projector 150™

Cleaning

Due to fog residue, smoke, and dust, cleaning the internal and external optical lenses must be carried out periodically to optimize light output.

1. Use normal glass cleaner and a soft cloth to wipe down the outside casing.
2. Use a brush to wipe down the fan grill.
3. Clean the external optics with glass cleaner and a soft cloth every 20 days. Situation may vary. If used heavily in clubs with lots of fog, cleaning may be required more often.
4. Clean the internal optics with glass cleaner and a soft cloth every 30-60 days.
5. Always be sure to dry all parts completely before plugging the unit in.

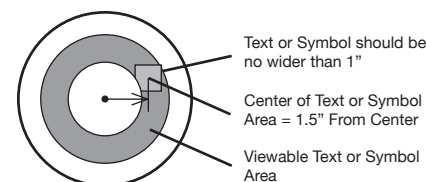
Cleaning frequency depends on the environment in which the fixture operates (i.e. smoke, fog residue, dust, dew). Proper cleaning may extend the life of your unit drastically

Projector 150™

Transparencies

The projector transparencies can be changed with custom transparencies created on a home computer and ink jet printer. With a little creativity anyone can create unique patterns, logos, and greetings to be projected to a wall, this is a sure way to tailor an event or evening. For best result when creating a custom transparencies, please follow the guidelines listed below;

1. Try not to use heavy or dark colors. These colors will not project very well and may project as black.
2. Any transparency may work, but for best result use 3M Universal Ink Jet Transparency Film (CG3480) or similar.
3. The transparency should have a radius of 5 1/2 inches (14mm). This will allow the transparency to fit between the two pieces of glass without slipping.
4. If a symbol or text is going to part of the transparency. The image should be no wider than 1" and the center of the image should be 1 1/2" from the center.

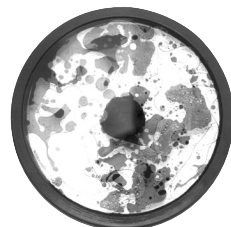


Projector 150™

Optional Accessories



35mm Slide Adaptor - This adaptor allows allow the unit to project a standard 35mm slide to a wall or flat surface. This adaptor can be used to consistently rotate the slide in one direction, or disconnect the power to connection to the slide adaptor to project the without any rotation.



Oil Wheel - This wheel may be used to project an oil wheel effect to a wall or flat surface. With this wheel the effect is constantly changing. The wheel is filled with different color oils that constantly shift directions caused by the spinning of the wheel and the warming effect from the lamp.

1 YEAR LIMITED WARRANTY

A. American DJ® hereby warrants, to the original purchaser, American DJ® products to be free of manufacturing defects in material and workmanship for a period of one year (365 days) from the date of purchase. This warranty shall be valid only if the product is purchased within the United States of America, including possessions and territories. It is the owner's responsibility to establish the date and place of purchase by acceptable evidence, at the time service is sought.

B. For warranty service, send the product only to the American DJ® factory. All shipping charges must be pre-paid. If the requested repairs or service (including parts replacement) are within the terms of this warranty, American DJ® will pay return shipping charges only to a designated point within the United States. If the entire instrument is sent, it must be shipped in its original package. No accessories should be shipped with the product. If any accessories are shipped with the product, American DJ® shall have no liability whatsoever for loss of or damage to any such accessories, nor for the safe return thereof.

C. This warranty is void if the serial number has been altered or removed; if the product is modified in any manner which American DJ® concludes, after inspection, affects the reliability of the product; if the product has been repaired or serviced by anyone other than the American DJ® factory unless prior written authorization was issued to purchaser by American DJ®; if the product is damaged because not properly maintained as set forth in the instruction manual.

D. This is not a service contract, and this warranty does not include maintenance, cleaning or periodic check-up. During the period specified above, American DJ® will replace defective parts at its expense, and will absorb all expenses for warranty service and repair labor by reason of defects in material or workmanship. The sole responsibility of American DJ® under this warranty shall be limited to the repair of the product, or replacement thereof, including parts, at the sole discretion of American DJ®. All products covered by this warranty were manufactured after January 1, 1990, and bear identifying marks to that effect.

E. American DJ® reserves the right to make changes in design and/or improvements upon its products without any obligation to include these changes in any products theretofore manufactured.

F. No warranty, whether expressed or implied, is given or made with respect to any accessory supplied with products described above. Except to the extent prohibited by applicable law, all implied warranties made by American DJ® in connection with this product, including warranties of merchantability or fitness, are limited in duration to the warranty period set forth above. And no warranties, whether expressed or implied, including warranties of merchantability or fitness, shall apply to this product after said period has expired. The consumer's and or Dealer's sole remedy shall be such repair or replacement as is expressly provided above; and under no circumstances shall American DJ® be liable for any loss or damage, direct or consequential, arising out of the use of, or inability to use, this product.

G. This warranty is the only written warranty applicable to American DJ® Products and supersedes all prior warranties and written descriptions of warranty terms and conditions heretofore published.

H. Lamps are not covered under this warranty.

Technical Specifications:

SPECIFICATIONS: MODEL - Projector 150™

Weight:	6 lbs.
Size:	9.25" x 4.75" x 5.75"
Lamp:	ZB-FCS 24v/150w, 50hrs.
Breaker:	3 Amps
Voltage:	120v~60Hz or 220v~50Hz
Duty Cycle:	None
Cooling:	Fan cooled
Sound Active:	No
Working Position:	Any Safe position

**Voltage is preset at the factory and may not be changed*

Please Note: Specifications and improvements in the design of this unit and this manual are subject to change without any prior written notice.

©American DJ Supply®

Part of the American DJ Group of Companies

American DJ World Headquarters:

6122 S. Eastern Ave Los Angeles, CA 90040 USA

Tel: 323-582-2650 / Fax: 323-725-6100

Web: www.americandj.com / E-mail: info@americandj.com