

RotoPod



User Instructions

American DJ®
4295 Charter Street
Los Angeles Ca. 90058
www.americandj.com

Revised 4/04

RotoPod™

Introduction

Introduction: Thank you for purchasing the RotoPod™ by American DJ®. The RotoPod™ is an improvement of the popular Sparkle™ by American DJ®. This new unit includes a clear mirror dish and a new high tech, light weight case design to produce a spectacular moon flower effect. This unit also includes superior optics for an overall crisp light output which intensifies beam intensity. The unit is designed to work as a single unit or look great in multiples. For a greater effect use several units on a chaser or in a chase pattern.

Customer Support: American DJ® provides a toll free customer support line, to provide set up help and to answer any question should you encounter problems during your set up or initial operation. You may also visit us on the web at www.americandj.com for any comments or suggestions. Service Hours are Monday through Friday 9:00 a.m. to 5:00 p.m. Pacific Standard Time.

Voice: (800) 322-6337

Fax: (323) 582-2610

E-mail: support@americandj.com

To purchase parts online visit <http://parts.americandj.com>

Warning! To prevent or reduce the risk of electrical shock or fire, do not expose this unit to rain or moisture.

Caution! There are no user serviceable parts inside this unit. Do not attempt any repairs yourself, doing so will void your manufactures warranty. In the unlikely event your unit may require service please contact American DJ.

Please recycle the shipping carton whenever possible.

RotoPod™

Unpacking

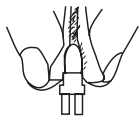
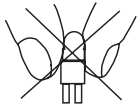
Unpacking: Every RotoPod™ has been thoroughly tested and has been shipped in perfect operating condition. Carefully check the shipping carton for damage that may have occurred during shipping. If the carton appears to be damaged, carefully inspect your units for any damage and be sure all accessories necessary to operate the system have arrived intact. In the event damage has been found or parts are missing, please contact our toll free customer support number for further instructions. Please do not return the system to your dealer without first contacting customer support.

©American DJ Supply® - www.americandj.com - RotoPod™ Instruction Manual Page 2

To optimize the performance of this product, please read these operating instructions carefully to familiarize yourself with the basic operations of this unit. These instructions contain important safety information regarding the use and maintenance of this unit. Please keep this manual with the unit, for future reference.

- Includes Built-In Hanging Yoke
- Slow Rotation
- Easy Access Lamp Replacement
- Light Weight
- Futuristic Case Design
- Low Cost LL-BRL 12v/50w Lamp

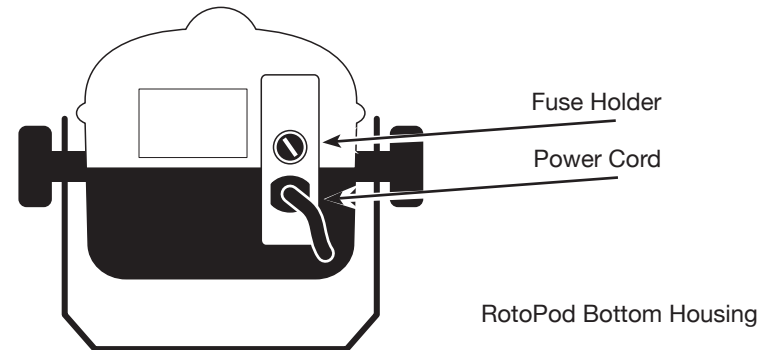
The RotoPod™ carries a one year (365 days) limited warranty. Please fill out the enclosed warranty card to validate your purchase. All returned service items whether under warranty or not, must be freight pre-paid and accompany a return authorization (R.A.) number. The R.A. number must be clearly written on the outside of the return package. A brief description of the problem as well as the R.A. number must also be written down on a piece of paper and included in the shipping container. If the unit is under warranty, you must provide a copy of your proof of purchase invoice. You may obtain a R.A. number by contacting customer support at (800) 322-6337.



Halogen Lamp Warning: This fixture is fitted with halogen lamps which are highly susceptible to damage if improperly handled. Never touch the lamps with your bare fingers as the oil from your hands will shorten lamp life. Also, never move the fixture until the lamps have had ample time to cool. Remember, lamps are not covered under warranty conditions.

General Operation:

This fixture is designed to operate as a stand alone unit, there is no need of a controller. The RotoPod™ creates a unique moonflower type effect using an internal spinning mirror dish. There is no power switch, after plugging the unit in, if there is no lamp output check the fuse and bulb. After plugging this fixture in, the units clear mirror dish will rotate. This fixture features a light weight case design and a hanging bracket. This unit will slowly turn in a single direction at a continuous speed. This fixture is designed for mobile DJ's, clubs, bands, roller rinks and any arena that requires a compact, light weight, easy to use fixture. Use a fog machine or other type of special effect smoke to enhance the beam intensity.

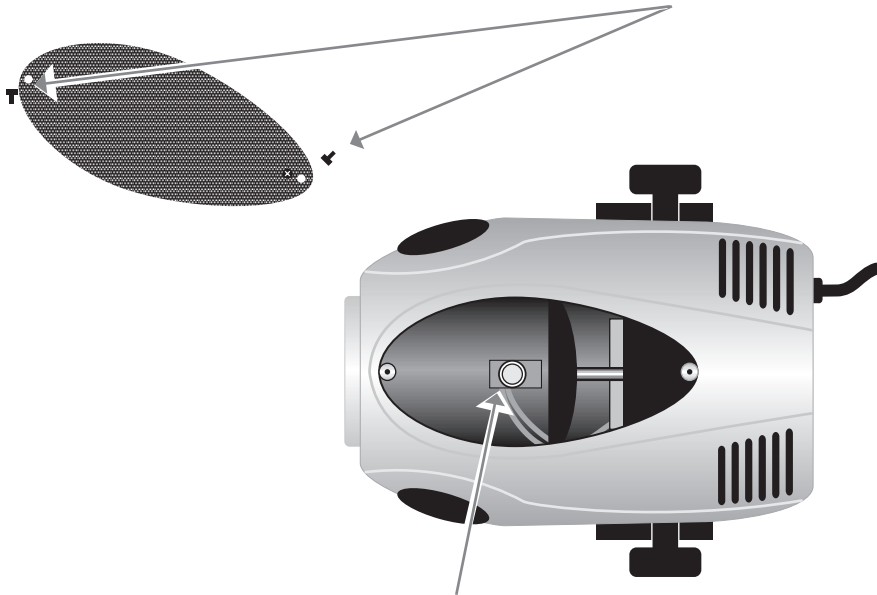


Caution: Always replace with the exact same type lamp, unless otherwise specified by an authorized American DJ® technician. Replace with anything other than the specified part can damage your unit and will void your manufactures warranty.

Warning: If after replacing the lamp you continue to blow lamps, STOP using the unit. Contact customer support for further instructions, you may have to return the unit for servicing. Continuing to use the unit may cause serious damage.

Lamp Replacement: Disconnect from the main power supply. Be sure the unit has had ample time to cool before attempting to replace the lamp. On the front of the unit there is a single thumb screw. Remove the thumb screw and pull back the front case housing. The housing is hinged which allows it to pull back without being removed. Remove the old lamp from the socket assembly. Carefully install the new lamp, be sure to follow all the installation guide lines that are included with your new lamp. Close the front cover and replace the thumb screw.

Remove the thumb screw on the front of the unit as illustrated below.

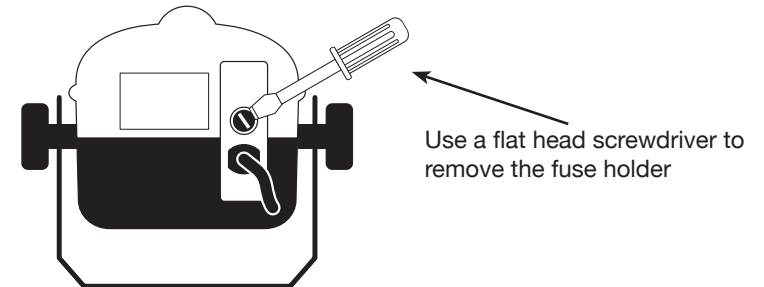


Remove the lamp from the socket and insert a new one as illustrated above.

Fuse Replacement: Disconnect from the main power supply. Insert a standard flat head screw driver in to the fuse holder housing as illustrated in figure two. Turn the screwdriver in counter-clockwise direction to remove the fuse holder. Remove the old fuse and discard it, replace the fuse with the same type. Insert the fuse back into it's housing.

If you continue to blow fuses, STOP using the unit. Returning the unit for servicing. Continuing to use the unit may cause serious damage.

Caution: Always replace with the exact same type lamp and fuse, unless otherwise specified by an authorized American DJ® technician.



Trouble Shooting: Listed below are a few common problems that you may encounter, with solutions.

No light output from the unit;

1. Be sure you have connected your unit into a wall outlet with a matching power supply.
2. Be sure the external fuse has not blown. The fuse is located on the rear panel.
3. Remove the lamp cover and be sure the lamp is seated in the socket properly. Occasionally lamps become loose during shipping, be sure the lamp is push in to the socket completely.
4. Be sure the lamp is good.

1-YEAR LIMITED WARRANTY

A. American DJ® hereby warrants, to the original purchaser, American DJ® products to be free of manufacturing defects in material and workmanship for a period of one year (365 days) from the date of purchase. This warranty shall be valid only if the product is purchased within the United States of America, including possessions and territories. It is the owner's responsibility to establish the date and place of purchase by acceptable evidence, at the time service is sought.

B. For warranty service, send the product only to the American DJ® factory. All shipping charges must be pre-paid. If the requested repairs or service (including parts replacement) are within the terms of this warranty, American DJ® will pay return shipping charges only to a designated point within the United States. If the entire instrument is sent, it must be shipped in its original package. No accessories should be shipped with the product. If any accessories are shipped with the product, American DJ® shall have no liability whatsoever for loss of or damage to any such accessories, nor for the safe return thereof.

C. This warranty is void if the serial number has been altered or removed; if the product is modified in any manner which American DJ® concludes, after inspection, affects the reliability of the product; if the product has been repaired or serviced by anyone other than the American DJ® factory unless prior written authorization was issued to purchaser by American DJ®; if the product is damaged because not properly maintained as set forth in the instruction manual.

D. This is not a service contract, and this warranty does not include maintenance, cleaning or periodic check-up. During the period specified above, American DJ® will replace defective parts at its expense, and will absorb all expenses for warranty service and repair labor by reason of defects in material or workmanship. The sole responsibility of American DJ® under this warranty shall be limited to the repair of the product, or replacement thereof, including parts, at the sole discretion of American DJ®. All products covered by this warranty were manufactured after January 1, 1990, and bear identifying marks to that effect.

E. American DJ® reserves the right to make changes in design and/or improvements upon its products without any obligation to include these changes in any products theretofore manufactured.

F. No warranty, whether expressed or implied, is given or made with respect to any accessory supplied with products described above. Except to the extent prohibited by applicable law, all implied warranties made by American DJ® in connection with this product, including warranties of merchantability or fitness, are limited in duration to the warranty period set forth above. And no warranties, whether expressed or implied, including warranties of merchantability or fitness, shall apply to this product after said period has expired. The consumer's and or Dealer's sole remedy shall be such repair or replacement as is expressly provided above; and under no circumstances shall American DJ® be liable for any loss or damage, direct or consequential, arising out of the use of, or inability to use, this product.

G. This warranty is the only written warranty applicable to American DJ® Products and supersedes all prior warranties and written descriptions of warranty terms and conditions heretofore published.

H. Lamps are not covered under this or any other warranty, either written or implied.

MODEL:	RotoPod™
VOLTAGE*:	120v~60Hz or 220v~50/60Hz
LAMP:	LL-BRL 12v/50w
DIMENSIONS:	10.1" x 6.5" x 5.5"
WEIGHT:	6 LBS
FUSE:	2 AMP GMA
WORKING POSITION:	ANY SAFE POSITION
COOLING:	AIR COOLED
GOBOS:	NONE
COLORS:	CLEAR MIRROR DISH
WARRANTY:	1 YEAR (365 DAYS)
OPTIONS:	Z-DW, Z-DW1, & Z-DW-2 - Dichroic Color Dishes

* Voltage is preset at the factory

Please Note: Specifications and improvements in the design of this unit and this manual are subject to change without any prior written notice.

©American DJ®

A Division of the American DJ® Group of Companies

World Headquarters:

4295 Charter Street Los Angeles, CA 90058 USA

Tel: 323-582-2650 Fax: 323-582-2610

Web: www.americandj.com E-mail: info@americandj.com