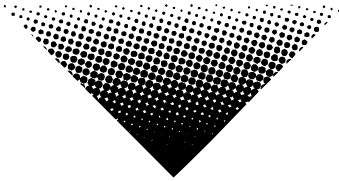


DMX-600 Intimidator™ 1.0

USER MANUAL



Chauvet, 3000 N 29th Ct, Hollywood, FL 33020 U.S.A
(800) 762-1084 – (954) 929-1115
FAX (954) 929-5560
www.chauvetlighting.com

TABLE OF CONTENT

TABLE OF CONTENT	2
BEFORE YOU BEGIN	3
WHAT IS INCLUDED	3
UNPACKING INSTRUCTIONS	3
AC POWER	3
SAFETY INSTRUCTIONS	3
INTRODUCTION	4
FEATURES	4
DMX CHANNEL SUMMARY	4
PRODUCT OVERVIEW	5
SETUP	6
LAMP	6
<i>Lamp installation</i>	6
POWER	6
MOUNTING	7
<i>Orientation</i>	7
<i>Rigging</i>	7
MANUAL FOCUSING	7
FUSE REPLACEMENT	7
OPERATING INSTRUCTIONS	8
OPERATING MODES	8
<i>Stand Alone</i>	8
<i>Master/Slave</i>	8
<i>Master/Slave settings</i>	8
<i>Optional Pan/Tilt Inverse</i>	8
<i>DMX Mode</i>	8
<i>Setting the starting address</i>	8
<i>CH-X Optional Blackout Controller</i>	9
APPENDIX	10
DMX PRIMER	10
<i>Fixture Linking</i>	10
DMX CHANNEL VALUES	11
MAINTENANCE	12
RETURNS PROCEDURE	12
CLAIMS	12
GENERAL TROUBLESHOOTING	13
TECHNICAL SPECIFICATIONS	14

BEFORE YOU BEGIN

What is included

- 1 x DMX-600 Intimidator™ 1.0
- Power cord with plug
- ELC 250w lamp
- Warranty Card
- Manual

Unpacking Instructions

Immediately upon receiving a fixture, carefully unpack the carton, check the contents to ensure that all parts are present, and have been received in good condition. Notify the shipper immediately and retain packing material for inspection if any parts appear damaged from shipping or the carton itself shows signs of mishandling. Save the carton and all packing materials. In the event that a fixture must be returned to the factory, it is important that the fixture be returned in the original factory box and packing.

AC Power

To determine the power requirements for a particular fixture, see the label affixed to the back plate of the fixture or refer to the fixture's specifications chart. A fixture's listed current rating is its average current draw under normal conditions. All fixtures must be powered directly off a switched circuit and cannot be run off a rheostat (variable resistor) or dimmer circuit, even if the rheostat or dimmer channel is used solely for a 0% to 100% switch. Before applying power to a fixture, check that the source voltage matches the fixture's requirement. Check the fixture or device carefully to make sure that if a voltage selection switch exists that it is set to the correct line voltage you will use.

Warning!

Verify that the voltage indicator label on your unit matches the line voltage applied. All fixtures must be connected to circuits with a suitable Earth Ground.

Safety Instructions



Please read these instructions carefully, which includes important information about the installation, usage and maintenance?



- Please keep this User Guide for future consultation. If you sell the unit to another user, be sure that they also receive this instruction booklet.
- Always make sure that you are connecting to the proper voltage and that the line voltage you are connecting to is not higher than that stated on decal or rear panel of the fixture.
- This product is intended for indoor use only!
- To prevent risk of fire or shock, do not expose fixture to rain or moisture. Make sure there are no flammable materials close to the unit while operating.
- The unit must be installed in a location with adequate ventilation, at least 50cm from adjacent surfaces. Be sure that no ventilation slots are blocked.
- Always disconnect from power source before servicing or replacing lamp or fuse and be sure to replace with same lamp source.
- Secure fixture to fastening device using a safety chain. Never carry the fixture solely by its head. Use its carrying handles.
- Maximum ambient temperature is Ta: 40°. Do not operate fixture at temperatures higher than this.
- In the event of serious operating problem, stop using the unit immediately. Never try to repair the unit by yourself. Repairs carried out by unskilled people can lead to damage or malfunction. Please contact the nearest authorized technical assistance center. Always use the same type spare parts.
- Don't connect the device to a dimmer pack.
- Make sure power cord is never crimped or damaged.
- Never disconnect power cord by pulling or tugging on the cord.
- Avoid direct eye exposure to lamp while it is on.

Caution!

There are no user serviceable parts inside the unit. Do not open the housing or attempt any repairs yourself. In the unlikely event your unit may require service, please contact CHAUVET.

INTRODUCTION

Features

Control Features

- 4 channel DMX-512 Intelligent Scanner
- Combined dichroic color/gobo wheel
 - 14 gobos plus white
 - 18 colors plus white
- Strobing
- Pan: 180° in .5 sec.
- Tilt: 90° in .3 sec.

Features

- Smart Link™
- Built in beat activated and automatic programs (stand-alone)
- Double bracket yoke doubles as floor stand
- Bulb saver cuts off after 10 seconds
- Surface coated mirror for optimum luminosity
- Automatically enters stand-alone when no DMX signal is present
- Linkable via Master/Slave
- Micro-stepping motors
- Thermal switch
- Fan cooled

Options

- Wired remote controllers: CH-X blackout controller
- Programmable: Any universal DMX-512 controller

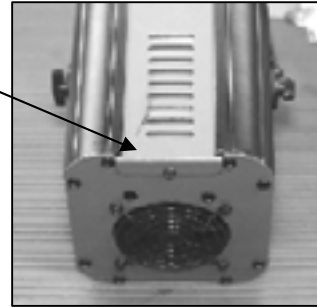
DMX Channel Summary

CHANNEL	FUNCTION
1	Color/Gobo
2	Strobe
3	Pan
4	Tilt

Product Overview

Hanging Yoke, double bracketed for floor positioning

Lamp access cover

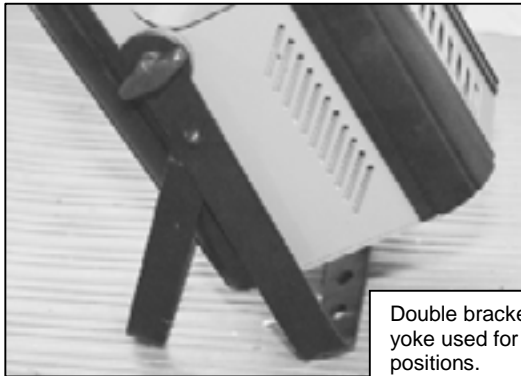
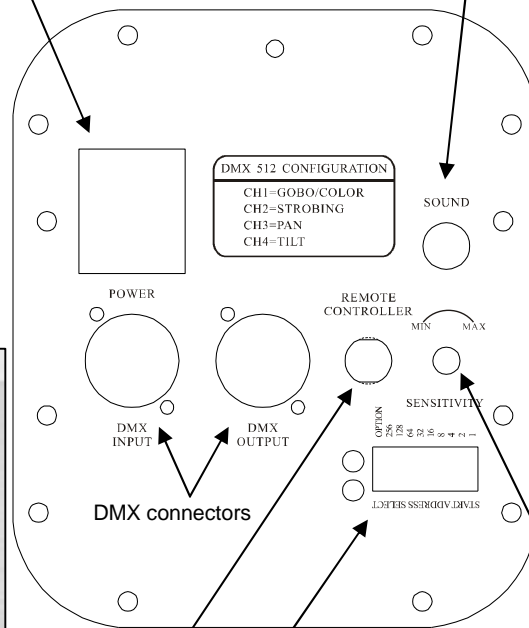


Mirror Scanner

Intimidator™ 1.0

Power & Fuse compartment

Microphone



Double bracketed yoke used for floor positions.

DMX connectors

Remote Controller Input

Sound Sensitivity Knob

SETUP

Lamp

You will need to install a lamp prior to the initial operation of the fixture. An ELC 250W halogen lamp is included.

Warning!

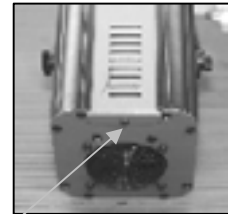
When replacing the lamp, please wait 15 minutes after powering down to allow the unit to cool down! Always disconnect from main power prior to lamp replacement.

Do not touch the envelope (glass area) of the bulb with bare hands. If this happens, clean the lamp with alcohol and wipe it with a lint free cloth before installation.

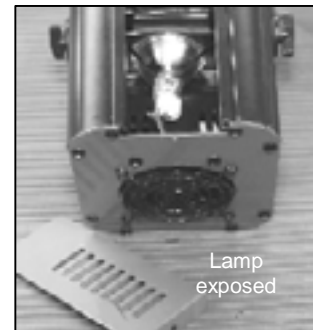
LAMP INSTALLATION

- 1) Remove the screw located just above the fan at the base of the fixture and proceed to slide the lamp cover plate towards the bottom to expose lamp.
- 2) If replacing the lamp, remove old lamp first.
- 3) Reach in and slide the lamp out of the retaining cage.
- 4) Detach the lamp from the lamp socket and replace.
- 5) Replace lamp cover plate and fasten the screw.
- 6) No lamp alignment is necessary for this fixture since the lamp is already optimized inside the reflector.

Lamp Installation



Remove screw



Power

Warning!

Verify that the voltage indicator label on your unit matches the line voltage applied. All fixtures must be connected to circuits with a suitable Earth Ground.

- To determine the power requirements for a particular fixture, see the label affixed to the back plate of the fixture or refer to the fixture's specifications chart.
- A fixture's listed current rating is its average current draw under normal conditions.
- All fixtures must be powered directly off a switched circuit and cannot be run off a rheostat (variable resistor) or dimmer circuit, even if the rheostat or dimmer channel is used solely for a 0% to 100% switch.
- Before applying power to a fixture, check that the source voltage matches the fixture's requirement.
- All fixtures must be connected to circuits with a suitable Earth Ground.

Mounting

ORIENTATION

This fixture may be mounted in any position provided there is adequate room for ventilation.

RIGGING

It is important never to obstruct the fan or vents pathway. Mount the fixture using a suitable "C" or "O" type clamp. Adjust the angle of the fixture by loosening both knobs and tilting the fixture. After finding the desired position, retighten both knobs.

Hanging Clamp



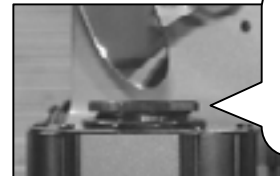
Note!
Clamp is sold separately.

- When selecting installation location, take into consideration lamp replacement access and routine maintenance.
- Safety cables should always be used.
- Never mount in places where the fixture will be exposed to rain, high humidity, extreme temperature changes or restricted ventilation.

Manual Focusing

To adjust the focus, please follow the instructions below.

- 1) If operating in stand alone mode, turn the music down so that the unit temporarily stops any activity.
- 2) In DMX control mode, create a static scene with any gobo of your choice pointed to a flat surface, ideally at a half-way point of the fixtures total coverage area.



Rotate lens gun clockwise and counter-clockwise to achieve desired focus.

Rotate the lens gun either clockwise or counter-clockwise until the spot is defined by a hard edge.

Fuse Replacement

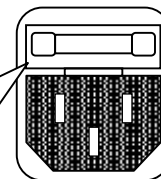


Disconnect the power cord before replacing a fuse and always replace with the same type fuse.



With a flat head screwdriver wedge the fuse holder out of its housing. Remove the damaged fuse from its holder and replace with exact same type fuse. Insert the fuse holder back in its place and reconnect power.

The fuse is located inside this compartment. Remove using a flat head screwdriver.



OPERATING INSTRUCTIONS

Operating Modes

- A stand-alone mode will listen to sound and run through its diverse range of built in programs.
- Master/Slave mode will allow the command of up to as many units you want in a synchronized light show to the sound.
- DMX control mode will provide the greatest flexibility and creativity. Each fixture trait can be controlled individually using any universal DMX-512 controller.

Stand Alone

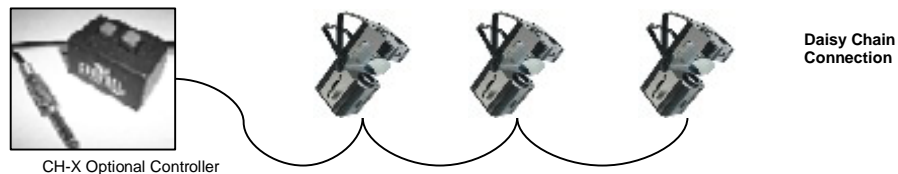
The Stand Alone mode is activated automatically when the fixture is absent of DMX signal or a controller is not connected. The fixture will run through its built in programs as it listens to the sound. Set all dipswitches in the OFF position.

Master/Slave

The Master/Slave mode will allow you to link up to as many units you want in a daisy chain fashion. In this mode, the first unit in the daisy chain will automatically command all other units following. Connecting this fixture for (Master/Slave) operation does not require any menu or setting selections. Simply connect each unit in a daisy like fashion using qualified 3 pin DMX cables as described below.

MASTER/SLAVE SETTINGS

- 1) Connect the (male) 3 pin connector side of the DMX cable to the output (female) 3 pin connector of the first fixture.
- 2) Connect the end of the cable coming from the first fixture which will have a (female) 3 pin connector to the input connector of the next fixture consisting of a (male) 3 pin connector. Then, proceed to connect from the output as stated above to the input of the following fixture and so on as illustrated below.



Note!

For additional information on linking fixtures read under section "DMX Primer"

OPTIONAL PAN/TILT INVERSE

Dipswitch # 10 set to the ON position will inverse both Pan and Tilt functions of your fixture. Movement will be reversed adding another dynamic to the built in programs.

DMX Mode

Operating in a DMX Control mode environment gives the user the greatest flexibility when it comes to customizing or creating a show. In this mode you will be able to control each individual trait of the fixture independently.

SETTING THE STARTING ADDRESS

This DMX mode enables the use of a universal DMX controller device. Each fixture requires a "start address" from 1 to 511. A fixture requiring one or more channels for control begins to read the data

on the channel indicated by the start address. For example, a fixture that occupies or uses 6 channels of DMX and was addressed to start on DMX channel 100, would read data from channels: 100, 101, 102, 103, 104, and 105. Choose start addresses so that the channels used do not overlap and notate the start address selected for future reference.

If this is your first time addressing a fixture using the DMX-512 control protocol than I suggest jumping to the Appendix Section and read the heading "DMX Primer". It contains very useful information that will help you understand its use.

Set the start address using the group of DIP switches located usually on bottom of the fixture. Each dip switch has an associated value. Adding the value of each switch in the ON position will provide the start address. Determining which switches to toggle ON given a specific start address can be accomplished in the following manner. By subtracting the largest switch value possible from the selected start address which does not cause a negative number.

EXAMPLE STARTING ADDRESS																							
<p>Address 10</p> <p>Pin # 4 = 8 Pin # 2 = 2 Total = 10</p>																							
<p>Address 24</p> <p>Pin # 5 = 16 Pin # 4 = 8 Total = 24</p>																							
<p>Resolving address using simple math.</p> <p>Address 233</p>	<p>233 – (128) = 105, Turn ON Dip # 8 105 – (64) = 41, Turn ON Dip # 7 41 – (32) = 9, Turn ON Dip # 6 9 – (8) = 1, Turn ON Dip # 4 1 – (1) = 0, Turn ON Dip # 1</p> <p>You will most likely use the first available number which maybe number 1. This number was selected for example purposes.</p> <table border="1" style="margin-left: auto; margin-right: auto;"> <thead> <tr> <th>DIP SWITCH</th> <th>(DMX VALUE)</th> </tr> </thead> <tbody> <tr><td>1</td><td>1</td></tr> <tr><td>2</td><td>2</td></tr> <tr><td>3</td><td>4</td></tr> <tr><td>4</td><td>8</td></tr> <tr><td>5</td><td>16</td></tr> <tr><td>6</td><td>32</td></tr> <tr><td>7</td><td>64</td></tr> <tr><td>8</td><td>128</td></tr> <tr><td>9</td><td>256</td></tr> <tr><td>10</td><td></td></tr> </tbody> </table>	DIP SWITCH	(DMX VALUE)	1	1	2	2	3	4	4	8	5	16	6	32	7	64	8	128	9	256	10	
DIP SWITCH	(DMX VALUE)																						
1	1																						
2	2																						
3	4																						
4	8																						
5	16																						
6	32																						
7	64																						
8	128																						
9	256																						
10																							

CH-X Optional Blackout Controller

The CH-X blackout controller is a dual button wired remote controller whose primary purpose is to provide a blackout function to the units. Only one controller is necessary on the master unit to blackout all other units following.



APPENDIX

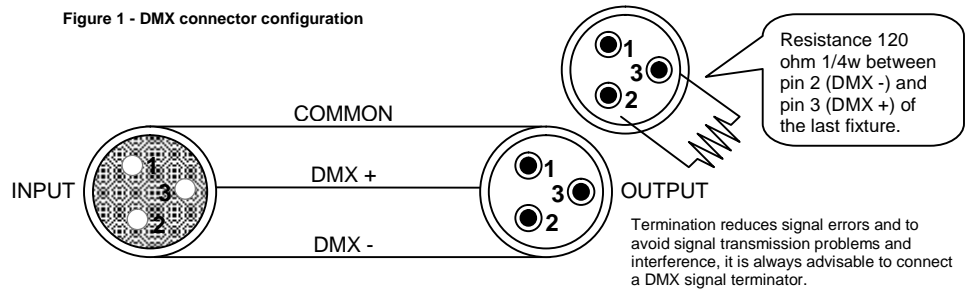
DMX Primer

There are 512 channels in a DMX-512 connection. Channels may be assigned in any manner. A fixture capable of receiving DMX 512 will require one or a number of sequential channels. The user must assign a starting address on the fixture that indicates the first channel reserved in the controller. There are many different types of DMX controllable fixtures and they all may vary in the total number of channels required. Choosing a start address should be planned in advance. Channels should never overlap. If they do, this will result in erratic operation of the fixtures whose starting address is set incorrectly. You can however, control multiple fixtures of the same type using the same starting address as long as the intended result is that of unison movement or operation. In other words, the fixtures will be slaved together and all respond exactly the same.

DMX fixtures are designed to receive data through a serial Daisy Chain. A Daisy Chain connection is where the DATA OUT of one fixture connects to the DATA IN of the next fixture. The order in which the fixtures are connected is not important and has no effect on how a controller communicates to each fixture. Use an order that provides for the easiest and most direct cabling. Connect fixtures using shielded two conductor twisted pair cable with three pin XLR male to female connectors. The shield connection is pin 1, while pin 2 is Data Negative (S-) and pin 3 is Data positive (S+). CHAUVET carries 3-pin XLR DMX compliant cables, DMX-10 (33'), DMX-4.5 (15') and DMX-1.5 (5')

FIXTURE LINKING

Figure 1 - DMX connector configuration



Note!

If you use a controller with a 5 pin DMX output connector, you will need to use a 5 pin to 3 pin adapter. CHAUVET Model No: DMX5M. The chart below details a proper cable conversion:

3 PIN TO 5 PIN CONVERSION CHART

CONDUCTOR	3 Pin Female (output)	5 Pin Male (Input)
GROUND/SHIELD	Pin 1	Pin 1
DATA (-) SIGNAL	Pin 2	Pin 2
DATA (+) SIGNAL	Pin 3	Pin 3
DO NOT USE		Do not use
DO NOT USE		Do not use

DMX Channel Values

Channel	Value	Function
1	000 ⇄ 009	Gobo/Color Closed
	010 ⇄ 019	White (Open)
	020 ⇄ 029	Gobo-Color 1
	030 ⇄ 039	Gobo-Color 2
	040 ⇄ 049	Gobo-Color 3
	050 ⇄ 059	Gobo-Color 4
	060 ⇄ 069	Gobo-Color 5
	070 ⇄ 079	Gobo-Color 6
	080 ⇄ 089	Gobo-Color 7
	090 ⇄ 099	Gobo-Color 8
	100 ⇄ 109	Gobo-Color 9
	110 ⇄ 119	Gobo-Color 10
	120 ⇄ 129	Gobo-Color 11
	130 ⇄ 139	Gobo-Color 12
	140 ⇄ 149	Gobo-Color 13
	150 ⇄ 159	Gobo-Color 14
160 ⇄ 249	Gobo Spin: Fast > Slow	
250 ⇄ 255	Sound Active	
2	000 ⇄ 010	Strobe (gobo-strobe) Open
	011 ⇄ 255	Strobe: Slow > Fast (adjacent gobos)
3	000 ⇄ 255	Pan 0° ~ 180°
4	000 ⇄ 255	Tilt 0° ~ 90°

Maintenance

To maintain optimum performance and minimize wear fixtures should be cleaned frequently. Usage and environment are contributing factors in determining frequency. As a general rule, fixtures should be cleaned at least twice a month. Dust build up reduces light output performance and can cause overheating. This can lead to reduced lamp life and increased mechanical wear. Be sure to power off fixture before conducting maintenance.

Unplug fixture from power. Use a vacuum or air compressor and a soft brush to remove dust collected on external vents and internal components. Clean all glass when the fixture is cold with a mild solution of glass cleaner or Isopropyl Alcohol and a soft lint free cotton cloth or lens tissue. Apply solution to the cloth or tissue and drag dirt and grime to the outside of the lens. Gently polish optical surfaces until they are free of haze and lint. Do not touch the lamp glass when cleaning fixture. Oil and dirt can cause damage and premature aging of the lamp. In the event that the lamp is touched or becomes dirty, clean the lamps with an alcohol wipe.

The cleaning of internal and external optical lenses and/or mirrors must be carried out periodically to optimize light output. Cleaning frequency depends on the environment in which the fixture operates: damp, smoky or particularly dirty surrounding can cause greater accumulation of dirt on the unit's optics. Clean with soft cloth using normal glass cleaning fluid. - Always dry the parts carefully. - Clean the external optics at least every 20 days. Clean the internal optics at least every 30/60 days.

Returns Procedure

Returned merchandise must be sent prepaid and in the original packing, call tags will not be issued. Package must be clearly labeled with a Return Merchandise Authorization Number (RA #). Products returned without an RA # will be refused. Call CHAUVET and request RA # prior to shipping the fixture. Be prepared to provide the model number, serial number and a brief description of the cause for the return. Be sure to properly pack fixture, any shipping damage resulting from inadequate packaging is the customer's responsibility. CHAUVET reserves the right to use its own discretion to repair or replace product(s). As a suggestion, proper UPS packing or double-boxing is always a safe method to use.

Claims

Damage incurred in shipping is the responsibility of the shipper; therefore the damage must be reported to the carrier upon receipt of merchandise. It is the customer's responsibility to notify and submit claims with the shipper in the event that a fixture is damaged due to shipping. Any other claim for items such as missing component/part, damage not related to shipping, and concealed damage, must be made within seven (7) days of receiving merchandise.

General Troubleshooting

Symptom	Solution(s)	Applies to			
		Lights	Foggers & Snow	Controllers	Dimmers & Chaser
Auto shut off	Check fan thermal switch reset	✓			
Beam is very dim or not bright	Clean optical system or replace lamp Check 220/110v switch for proper setting	✓			
Breaker/Fuse keeps blowing	Check total load placed on device				✓
Chase is too slow	Check users manual for speed adjustment	✓		✓	✓
Device has no power	Check for power on Mains. Check device's fuse. (internal and/or external)	✓		✓	✓
Fixture is not responding	Check DMX Dip switch settings for correct addressing Check DMX cables Check polarity switch settings	✓			
Fixture is on but there is no movement to the audio	Make sure you have the correct audio mode on the control switches. If audio provided via 1/4" jack, make sure a live audio signal exists Adjust sound sensitivity knob	✓		✓	✓
Lamps cuts off sporadically	Possible bad lamp or fixture is overheating. Lamp may be at end of its life.	✓			
Light will not come on after power failure	Some discharge lamps require a cooling off period before the electronics in the fixture can kick start it again, wait 5 to 10 minutes before powering up	✓			
Loss of signal	Use only DMX cables Install terminator Note: Keep DMX cables separated from power cables or black lights.	✓	✓	✓	✓
Motor movements are jerky or jumpy	Possible bad motor driver or sensors Check polarity switch on controller	✓		✓	
Moves slow	Check 220/110v switch for proper setting	✓			
No flash	Re-install bulb, may have shifted in shipping	✓			
No light output	Check slip ring & brushes for contact Install bulb Call service technician	✓			
Relay will not work	Check reset switch Check cable connections				✓
Remote does not work	Make sure connector is firmly connected to device	✓	✓		
Stand alone mode	All CHAUVET lighting fixtures featuring stand-alone functions do not require additional settings, simply power the fixture and it will automatically enter into this mode	✓			
Unit wobbles when rotating	Check for damages possibly incurred during shipping	✓			

Technical Specifications

WEIGHT & DIMENSIONS

Length..... 330 mm (13.00 in)
 Width..... 160 mm (6.31 in)
 Height 135 mm (5.31 in)
 Weight..... 4.26 Kg (9.4 lbs)

POWER

Power..... 115V 60 Hz or 230V 50 Hz
 AC input 3-prong IEC 60320 C14 male socket
 European version 230V/240V 50 Hz

LAMPS

ELC..... 250W 24V

THERMAL

Maximum ambient temperature..... 40° (104° F)

FUSE

Main..... 20mm Glass 3.15A Fast Blow

CONTROL & PROGRAMMING

Data input locking 3-pin XLR male socket
 Data output locking 3-pin XLR female socket
 Data pin configuration pin 1 shield, pin 2 (-), pin 3 (+)
 Protocols..... DMX-512 USITT
 DMX Channels..... 4

ORDERING INFORMATION

Intimidator™ 1.0..... DMX-600
 CH-X Blackout Controller CH-X