



TECHNICAL REFERENCE & MANUAL

DMX MEGA STROBE DMX-750



CHAUVET
3000 North 29th Ct.
Hollywood, FL 33020 USA
Tel: 954-929-1115 Fax: 954-929-5560

www.CHAUVETlighting.com

Table of Contents

WARRANTY INFORMATION.....3

INTRODUCTION4
 Product Overview4
 Technical Specifications5
 What is enclosed?5

BEFORE YOU BEGIN.....6
 Unpacking Instructions6
 Installation6
 Powering6
 Warnings.....7

OPERATING INSTRUCTIONS.....8
 General.....8
 DMX Primer8
 DMX Control Mode.....8
 Self-Test Mode9
 Automatic Sound-to-Light Mode.....10
 DMX Channel Attributes.....10

APPENDIX11
 Maintenance.....11
 Returns Procedure.....11
 Claims11
 General Troubleshooting12

Issue Date:	December 2003		
Rev. No.	Version	Date	Description
0	1.00	Dec 2003	DMX-750 Users Guide version 1.00: Author: V.M. at CHAUVET
	1.10	Feb 2004	DMX-750 Users Guide version 1.10: Author: V.M. at CHAUVET

Warranty Information

We take great pride in the quality, value and performance of our products and believe that it should offer you trouble free operation throughout its lifetime providing you take care to follow the simple instructions in this manual.

LIMITED WARRANTY

- a) CHAUVET provides, from the date of purchase, to the original purchaser, a 24-month limited warranty on all DMX products, a 12-month limited warranty on special effect fixtures and controllers and a 3-month limited warranty on items with an "NV" prefix. This limited warranty covers manufacturing defects in material and workmanship only. At the time of service, the owner will need to be able to provide evidence of date and place of purchase and serial number.
- b) CHAUVET does not cover damage or failure caused by abuse, misuse, faulty installation, improper maintenance, or any repairs not carried out by CHAUVET.
- c) Items which are not covered by warranty are those considered as parts which are prone to failure due to general wear and tear. For example – lamps, fuses, brushes and belts. Laser diodes carry a (90day) warranty. For foggers, see user manual.
- d) There will be no obligations or liability on the part of CHAUVET for consequential damages arising from the use of the product or any indirect damages with respect to loss of property, revenue, or costs for removal, installation, or re-installation.
- e) For warranty service the product must be reported to CHAUVET to receive a unique RA# (returns authorization number) and at that time you will be advised of where to send the faulty product.
- f) All shipping charges for returns should be pre-paid. If the requested repairs or service are within the terms of this warranty then the item will be returned to you on completion without any charge. The unit must be in its original packaging with any original accessories. CHAUVET will not be responsible or accept any liabilities for any loss or damage to additional items which are sent with returned product.
- g) If this product is not covered under the terms of this warranty, CHAUVET will advise you of the costs to carry out any repairs necessary and the unit will be shipped to you on receipt of payment for the work including the return freight charges.
- h) Please allow 2 to 4 weeks for return of your product. Under normal circumstances we try to ensure we carry out warranty repairs within 5 working days. We cannot be held responsible for delays in shipping.

Title	First Name	Initials	Last Name
Address			Apt.
City	State	Or Province	
Country	Zip Code	Or Postal Code	Date of Birth
e-mail		Telephone # (include area code)	
Date of Purchase	Purchase Price (before tax)	Model	Serial #
Dealer	City	Country	

**CHAUVET U.S.A.
Warranty Registration
3000 North 29th Ct.
Hollywood, FL 33020 U.S.A.**

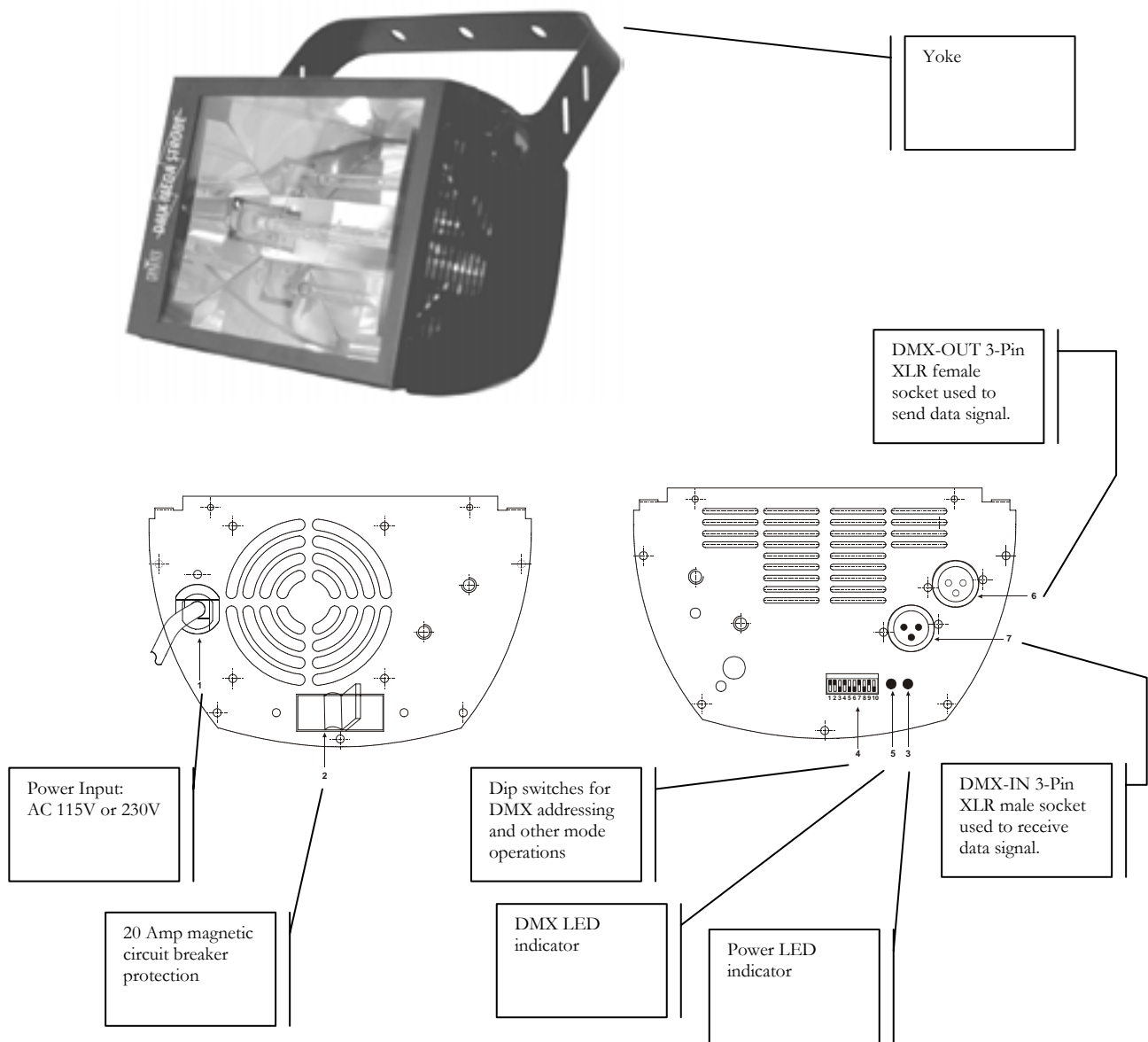
To return via fax: 954-929-5560

To return via mail:

Introduction

Product Overview

Thank you for purchasing the “DMX Mega Strobe” Model Number DMX-750. It is a very powerful and high output xenon strobe with enhanced features. It can operate in a sound to light mode and using any universal DMX control device. Enhanced operational manual controls using dip switches provide for both controls of intensity as well as a flash rate. An on-board thermal and circuit protection ensures safe operation for many years to come.



Technical Specifications

Power	16 Amps at 230V or 20 Amps at 115V Fan cooled Built-in thermal sensor protection Includes 20A magnetic circuit breaker
Lamp	750 Watt Xenon Strobe CHAUVET Model No. CH750B
Dimensions	12.6 in x 8.15 in x 5.35 in
Shipping	10.14 Lbs Master Packed 4pcs/42 Lbs
Control	DMX-512 via XLR 3-Pin Connectors, IN & OUT Operates on 2 Channels of DMX
Features	Blinder (Rapid Flash) Lightning Effect Dimmer variable 0-100% 10 million flash life-cycle Built in stand-alone operation <ul style="list-style-type: none"> a) beat activated b) adjust speed via dipswitches c) adjustable output 0-100% via dipswitches Programmable using any universal DMX controller.
Warranty	2 Year Limited Warranty

What is enclosed?

- Manual / Warranty Card
- DMX-750 Mega Strobe
- Lamp (CH750B) Installed
- Power cord with plug (affixed to device)
- Mounting bracket with knobs

Before you Begin

Unpacking Instructions

Immediately upon receiving a fixture, carefully unpack the carton, check the contents to ensure that all parts are present, and have been received in good condition. Notify the shipper immediately and retain packing material for inspection if any parts appear damaged from shipping or the carton itself shows signs of mishandling. Save the carton and all packing materials. In the event that a fixture must be returned to the factory, it is important that the fixture be returned in the original factory box and packing.

Installation

This fixture may be mounted in any position provided there is adequate room for ventilation. It is important never to obstruct the fan or vents pathway. Mount the fixture using, preferably the center mounting holes and a suitable “C” or “O” type clamp. Adjust the angle of the fixture by loosening both knobs and tilting the fixture. After finding the desired position, retighten both knobs. When selecting installation location, take into consideration lamp replacement access and routine maintenance. Safety cables should always be used. Never mount in places where the fixture will be exposed to rain, high humidity, extreme temperature changes or restricted ventilation.

Powering

To determine the power requirements for a particular fixture, see the label affixed to the back plate of the fixture or refer to the fixture’s specifications chart. A fixture’s listed current rating is its average current draw under normal conditions. All fixtures must be powered directly off a switched circuit and cannot be run off a rheostat (variable resistor) or dimmer circuit, even if the rheostat or dimmer channel is used solely for a 0% to 100% switch. Before applying power to a fixture, check that the source voltage matches the fixture’s requirement. All fixtures must be connected to circuits with a suitable Earth Ground. Check the fixture or device carefully to make sure that if a voltage selection switch exists that it is set to the correct line voltage you will use.

Warnings

1. This product is intended for indoor use only!
2. Keep out of the reach of children!
3. Make sure power cord is never crimped or damaged.
4. Never disconnect power cord by pulling or tugging on the cord.
5. Always make sure that you are connecting to the proper voltage and that the line voltage you are connecting to is not higher than that stated on decal or rear panel of the fixture.
6. Do not disassemble this electrical product; there are no user serviceable parts inside.
7. Always disconnect from power source before servicing or replacing lamp or fuse and be sure to replace with same lamp source.
8. To prevent risk of fire or shock, do not expose fixture to rain or moisture.
9. Avoid direct eye exposure. Gas discharge lamps generate UV radiation. Never operate the lamp without appropriate protection as it could damage skin and eyes. These lamps operate at high pressures and there is always a slight risk of tube rupture. The risk of rupture increases with age, temperature and improper handling of the lamp. These lamps also generate UV radiation. The UV radiation that is emitted extends well below 287nm, which is considered the point at which the UV radiation becomes imminently harmful. Exposure to this short wave UV should be limited. If aligning a lamp, care must be taken to reduce the exposure time to the lamp. Never look directly at any lamp while it is powered on. Read the booklet that accompanies each lamp and heed attention to the warnings concerning exposure to skin and eyes. Use appropriate eye protection to block all UV rays. Do not use ordinary sunglasses.

Operating Instructions

General

The DMX-750 is a 750 watt high output xenon strobe light that can be remotely operated using any universal DMX 512 controller. It is well suited for large rooms and can be daisy chained with additional DMX-750 strobes. You can vary the flash rate, intensity and trigger a preset lightning type effect commonly called “hyper-flash” or “Blinder effect”.

DMX Primer

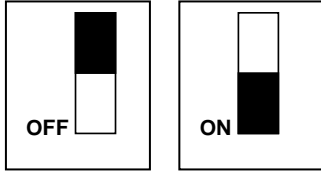
There are 512 channels in a DMX-512 connection. Channels may be assigned in any manner. A fixture capable of receiving DMX 512 will require one or a number of sequential channels. The user must assign a starting address on the fixture that indicates the first channel reserved in the controller. There are many different types of DMX controllable fixtures and they all may vary in the total number of channels required. Choosing a start address should be planned in advance. Channels should never overlap. If they do, this will result in erratic operation of the fixtures whose starting address is set incorrectly. You can however, control multiple fixtures of the same type using the same starting address as long as the intended result is that of unison movement or operation. In other words, the fixtures will be slaved together and all respond exactly the same.

DMX fixtures are designed to receive data through a serial Daisy Chain. A Daisy Chain connection is where the DATA OUT of one fixture connects to the DATA IN of the next fixture. The order in which the fixtures are connected is not important and has no effect on how a controller communicates to each fixture. Use an order that provides for the easiest and most direct cabling. Connect fixtures using shielded two conductor twisted pair cable with three pin XLR male to female connectors. The shield connection is pin 1, while pin 2 is Data Negative (S-) and pin 3 is Data positive (S+). CHAUVET carries 3-pin XLR DMX compliant cables, DMX-10 (33'), DMX-4.5 (15') and DMX-1.5 (5')

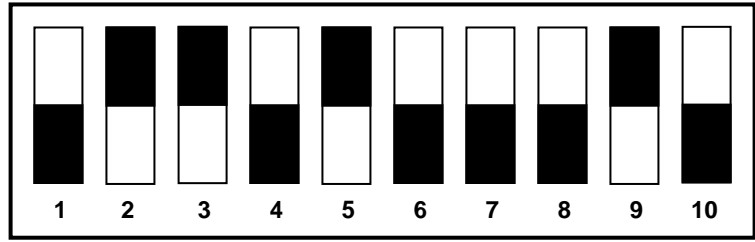
DMX Control Mode

This mode enables the use of a universal DMX controller device. Each fixture requires a "start address" from 1 to 512. A fixture requiring one or more channels for control begins to read the data on the channel indicated by the start address. For example, a fixture that occupies or uses 6 channels of DMX and was addressed to start on DMX channel 100, would read data from channels: 100, 101, 102, 103, 104, and 105. Choose start addresses so that the channels used do not overlap and notate the start address selected for future reference. Set the start address using the group of DIP switches located usually on the exterior of the fixture. Each dip switch has an associated value. Adding the value of each switch in the ON position will provide the start address. Determining which switches to toggle ON given a specific start address can be accomplished in the following manner. By subtracting the largest switch value possible from the selected start address which does not cause a negative number.

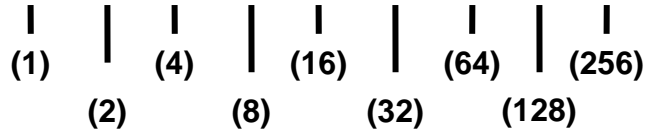
Example 1:
Starting address (233)
illustrated.



SWITCH



DMX VALUE



Example 2:
Resolving starting address (233)
using simple math.

233 – (128) = 105, Turn ON Dip # 8
105 – (64) = 41, Turn ON Dip # 7
41 – (32) = 9, Turn ON Dip # 6
9 – (8) = 1, Turn ON Dip # 4
1 – (1) = 0, Turn ON Dip # 1

Turn ON Dip # 10 to activate DMX Mode

You will most likely use the first available address. This number was selected for example purposes.

Dip Switch	(DMX Value)
1	1
2	2
3	4
4	8
5	16
6	32
7	64
8	128
9	256
10	ON = Activate DMX Control

Self-Test Mode

With Dip Switch # 10 set to the OFF position the following assignments will result in the playback of pre-programmed test patterns.

MANUAL		AUTO	
Dip Switch	Function	Dip Switch	Function
9	ON	9	OFF
1 – 4	SPEED	1 – 8	RANDOM
5 – 8	INTENSITY		

Enhanced Settings for Test Mode					
Level	Dip Switches 1 – 4 Reflects ON position all others OFF	Speed	Level	Dip Switches 5 -8 Reflects ON position all others OFF	Intensity
1	-	Slowest	1	-	Bright
2	1		2	5	
3	2		3	6	
4	1, 2	To	4	5, 7	To
5	3		5	7	
6	1, 4		6	5, 8	
7	2, 3	Fastest	7	6, 7	Brightest
8	1, 2, 3		8	5, 6, 7	

Table continued on next page.

Continuation from previous table.					
Level	Dip Switches 1 – 4 Reflects ON position all others OFF	Speed	Level	Dip Switches 5 -8 Reflects ON position all others OFF	Intensity
9	4	Slowest To Fastest	9	8	Bright To Brightest
10	1, 2		10	5, 6	
11	1, 4		11	5, 8	
12	1, 2, 4		12	5, 6, 8	
13	3, 4		13	7, 8	
14	1, 3, 4		14	5, 7, 8	
15	2, 3, 4		15	6, 7, 8	
16	1, 2, 3, 4		16	5, 6, 7, 8	

Automatic Sound-to-Light Mode

This mode enables the fixture to move or dance to the sound of the music, independent of controller.

Dip Switch	Function
1 – 8	ON
9 – 10	OFF

DMX Channel Attributes

Channel	Value	Function	Type of Control
1	0 – 254 255	Strobing, (Flash) Rate Sound to Light auto mode	Proportional
2	0 – 255	Intensity, (Dimmer)	Proportional
Hyper-flash Effect (Blinder Mode)			
1	43 - 254	Blinder effect Required for Blinder effect or Audio Mode	Proportional Step
2	0		
Sound to Light (Audio Mode)			
1	255	Flash automatically to sound Required for audio mode	Step Step
2	0		

Appendix

Maintenance

To maintain optimum performance and minimize wear fixtures should be cleaned frequently. Usage and environment are contributing factors in determining frequency. As a general rule, fixtures should be cleaned at least twice a month. Dust build up reduces light output performance and can cause overheating. This can lead to reduced lamp life and increased mechanical wear. Be sure to power off fixture before conducting maintenance.

Unplug fixture from power. Use a vacuum or air compressor and a soft brush to remove dust collected on external vents and internal components. Clean all glass when the fixture is cold with a mild solution of glass cleaner or Isopropyl Alcohol and a soft lint free cotton cloth or lens tissue. Apply solution to the cloth or tissue and drag dirt and grime to the outside of the lens. Gently polish optical surfaces until they are free of haze and lint. Do not touch the lamp glass when cleaning fixture. Oil and dirt can cause damage and premature aging of the lamp. In the event that the lamp is touched or becomes dirty, clean the lamps with an alcohol wipe.

Returns Procedure

Returned merchandise must be sent prepaid and in the original packing, call tags will not be issued. Package must be clearly labeled with a Return Merchandise Authorization Number (RA #). Products returned without an RA # will be refused. Call CHAUVET and request RA # prior to shipping the fixture. Be prepared to provide the model number, serial number and a brief description of the cause for the return. Be sure to properly pack fixture, any shipping damage resulting from inadequate packaging is the customer's responsibility. CHAUVET reserves the right to use its own discretion to repair or replace product(s). As a suggestion, proper UPS packing or double-boxing is always a safe method to use.

Claims

Damage incurred in shipping is the responsibility of the shipper; therefore the damage must be reported to the carrier upon receipt of merchandise. It is the customer's responsibility to notify and submit claims with the shipper in the event that a fixture is damaged due to shipping.

Any other claim for items such as missing component/part, damage not related to shipping, and concealed damage, must be made within seven (7) days of receiving merchandise.

General Troubleshooting

Symptom	Solution(s)	Applies to			
		Lights	Foggers & Snow	Controllers	Dimmers & Chaser
Auto shut off	Check fan thermal switch reset	✓			
Beam is very dim or not bright	Clean optical system or replace lamp Check 220/110v switch for proper setting	✓			
Breaker/Fuse keeps blowing	Check total load placed on device				✓
Chase is too slow	Check users manual for speed adjustment	✓		✓	✓
Device has no power	Check for power on Mains. Check device's fuse. (internal and/or external)	✓		✓	✓
Fixture is on but there is no movement to the audio	Make sure you have the correct audio mode on the control switches. If audio provided via ¼" jack, make sure a live audio signal exists Adjust sound sensitivity knob	✓		✓	✓
Fluid indicator not working	The filter tip on the end of the tube inserted into the fluid container must float freely in order to measure correctly, check to see if perhaps it is stuck		✓		
Fogger or Snow output has dropped	Clean with distilled water and vinegar Replace hose		✓		
Lamps cuts off sporadically	Possible bad lamp or fixture is overheating. Lamp may be at end of its life.	✓			
Light will not come on after power failure	Some discharge lamps require a cooling off period before the electronics in the fixture can kick start it again, wait 5 to 10 minutes before powering up	✓			
Loss of signal	Use only DMX cables Install terminator	✓	✓	✓	✓
Motor movements are jerky or jumpy	Possible bad motor driver or sensors Check polarity switch on controller	✓		✓	
Moves slow	Check 220/110v switch for proper setting	✓			
No flash	Re-install bulb, may have shifted in shipping	✓			
No fog	Check fluid tank if empty Make sure green light is on (for power)		✓		
No laser output	Bounce mirror motor may have shifted during shipping, readjust	✓			
No light output	Check slip ring & brushes for contact Install bulb Call service technician	✓			
Relay will not work	Check reset switch Check cable connections				✓
Remote does not work	Make sure connector is firmly connected to device	✓	✓		
Stand alone mode	All Chauvet lighting fixtures featuring stand-alone functions do not require additional settings, simply power the fixture and it will automatically enter into this mode	✓			
Unit wobbles when rotating	Check for damages possibly incurred during shipping	✓			