

Modular Video Panel

MVP™

526P PROCESSOR

Quick Reference Guide



CHAUVET®
It's Green Thinking

About This Guide

The MVP™ 526P Signal Processor Quick Reference Guide (QRG) contains the product's connection, mounting, and installation information.

Disclaimer

- This Quick Reference Guide DOES NOT replace the product's User Manual, which you can download from the CHAUVET® website at www.chauvetlighting.com.
- You must read ALL the disclaimers and Safety Notes in this document, as well as those in the product's User Manual before installing, operating, or maintaining this product.
- This product contains no user serviceable parts. Any reference to servicing in this Guide will only apply to properly trained CHAUVET® certified technicians. Do not open the housing or attempt any repairs.

Safety Notes

- Always connect this product to a grounded circuit to avoid the risk of electrocution.
- For indoor use only.
- The maximum ambient temperature is 122° F (50° C). Do not operate this product at higher temperatures.
- Do not operate this product if you see damage on the housing or cables. In any of these cases, have the damaged parts replaced by an authorized technician.
- Do not open or modify the product.
- Make sure this product is connected to the proper voltage provided in this Guide's specifications and/or the specification sticker on the product.
- Do not run this product near magnets, TV, or transformers.
- Never try to repair this product. Repairs carried out by unskilled people can lead to damage or malfunction. Please contact CHAUVET® Technical Support.
- Any damages caused by manual modifications are not subject to warranty. CHAUVET® will not accept liability for any resulting damages caused by unauthorized modifications or not observing the safety warnings and instructions in this Guide.

What Is Included

- One MVP™ 526P Signal Processor
- One USB Cable
- One DVI Cable
- One IEC to Edison Power Cable
- One Audio BNC to RCA Cable
- One Copy of Control Software
- One Warranty Card
- One Quick Reference Guide

Features

- Supports freeze-frame, PIP (picture-in-picture), POP (picture-on-picture), and PBP (picture-by-picture).
- User configurable pixel-based scaling enables any input source to display on the video wall.
- USB input enables flash drive plug-n-play directly from the processor to the video wall without using a computer.
- Audio inputs eliminate the need for a separate audio switching system and provide easy synchronization.
- Integrated transition builder enables you to switch easily between sources with professional, customizable transition graphics.
- Standard and high-definition compatibility.
- Provides eleven (11) input sources supporting a variety of connections that accept nearly any media, along with eight (8) output resolutions.
- Three user-defined presets to save and easily recall custom settings.

Product Description

The MVP™ 526P Signal Processor (MVP™ 526P) uses the latest high-performance image processing technology and provides switching and control for multiple input sources (live camera, DVD player, etc.). By using the MVP™ 526P, you can independently control and configure scaling, positioning, brightness, contrast, color correction, along with many other effects.

You can control the effects using either the front panel keyboard or a PC software interface. The MVP™ 526P connects to the video wall via the MVP™ Driver.

Refer to the *MVP™ 526P Processor Software User Manual* for information and instructions on software use.

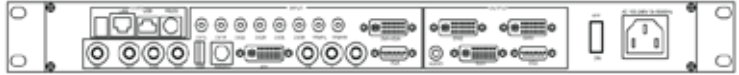
Note: The MVP™ 526P Signal Processor is an optional component to the MVP™ Video Wall System, but is required if you want or need to send alternate video and audio sources directly to the MVP™ Video Wall. The MVP™ 526P Signal Processor is the recommended signal processor to use.

**Product
Overview**

Front Panel



Back Panel



**Product
Dimensions**

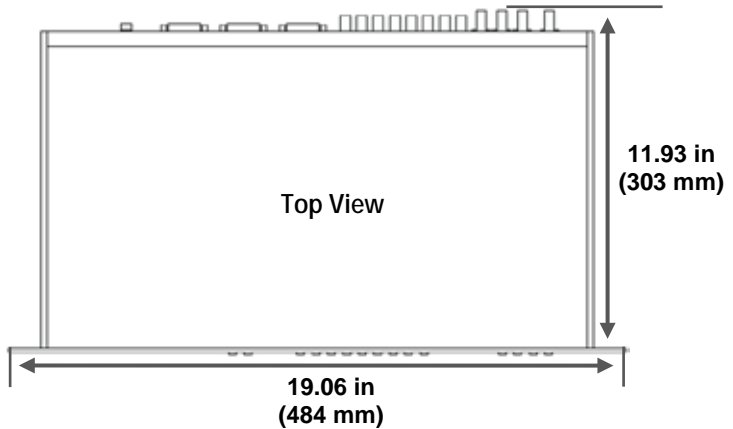
11.93 (303 mm) x 19.06 (484 mm) x 1.77 in (45 mm)

Front Panel

1.77 in
(45 mm)



Top View



AC Power

This product has an auto-ranging power supply that can work with an input voltage range of 100~240 VAC, 50/60 Hz.

Video Input/Output

The MVP™ 526P provides high performance video and audio input and output providing eleven (11) output connections.

Video Source Input

- CV (3)
- YPbPr (1)
- SVIDEO (1)
- DVI (2)
- VGA (2)
- USB (1)
- SDI (1, SD +HD)

Video Output

Video Output: DVI-D (3), VGA (1)

Display Refresh Rate: 2,000 Hz (flicker free)

Video Refresh Rate: 60 Hz

Refer to the *Back Panel Connections* section in this Guide for diagrams.

Output Resolution

The MVP™ 526P supports 8 output resolutions:

- 800 x 600 x 60 Hz
- 1024 x 768 x 60 Hz
- 1280 x 768 x 60 Hz
- 1280 x 1024 x 60 Hz
- 1440 x 900 x 60 Hz
- 1400 x 1050 x 60 Hz
- 1920 x 1080 x 60 Hz
- 1600 x 1200 x 60 Hz

To select a resolution from the front panel keyboard:

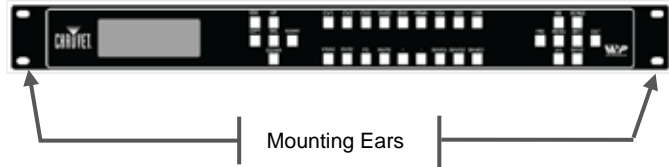
1. Press the **<OUT>** button.
2. Press either **<UP>** or **<DOWN>** to find the resolution.
3. Press **<SEL>** to select the resolution.

Mounting

Before mounting this product, read the Safety Notes at the beginning of this guide.

The MVP™ 526P Signal Processor is constructed of aluminum alloy. This product can be rack mounted (2U) using the mounting ears on either side of the front panel. Mount this product near your PC and your MVP™ Driver for easy connection and setup.

Product
Mounting
Diagram



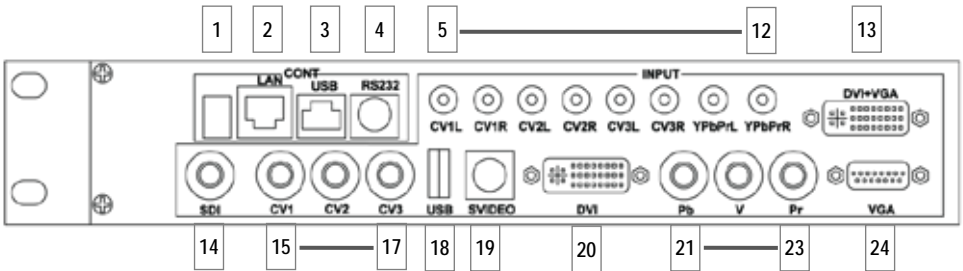
Back Panel Connections

The connections that are located on the back panel of the MVP™ 526P include computer, video, audio, and DVI input and output.

The back panel is organized into four sections: Controls, Input, Output, and Power. For illustrative purposes, the following diagrams of the back panel connections have been organized into: (1) Controls and Input connections, and (2) Output and Power.

Refer to the following diagrams.

CONTROL & INPUT CONNECTIONS



| Number | Description |
|--------|-------------|
|--------|-------------|

CONTROL

- 1 DIP switches
- 2 LAN RJ-45 Port
- 3 USB Control Port
- 4 RS232 Control Port

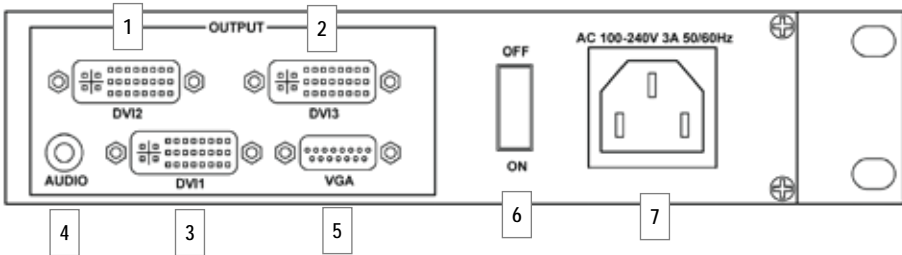
INPUT

- 5 – 12 Audio Input Connectors
- 13 DVI + VGA Input Connectors
- 14 SDI Female BNC Connector
- 15 – 17 Composite Female BNC Connectors (CV1, CV2, and CV3)
- 18 USB Input Connector
- 19 SVideo Input Connector
- 20 DVI Input Connector
- 21 – 23 Component Three Female BNC Connectors
- 24 DSUB 15-pin VGA Input Connector

Back Panel Connections (cont.)

Following is Output and Power connection information.

OUTPUT & POWER CONNECTIONS

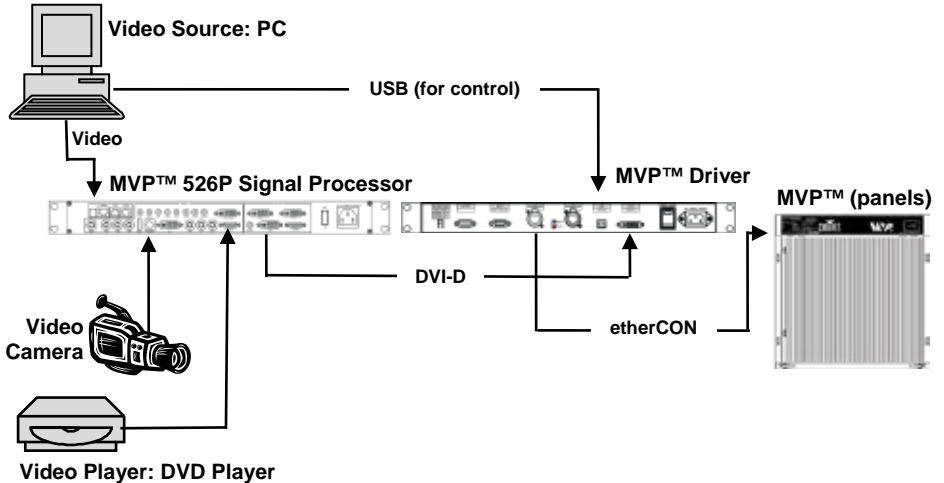


| Number | Description |
|--------|----------------------------------|
| 1 - 3 | DVI Output Connectors |
| 4 | Audio Output Connector |
| 5 | DSUB 15-Pin VGA Output Connector |
| 6 | Power Switch |
| 7 | Power Cord Connector IEC |

- ### Powering Up the MVP™ 526P
- This product supports AC from 100 to 240 VAC, 50-60 Hz. The CV1 input is the default source.
1. Push the Power Switch to **ON**.
 2. The LCD display on the front panel of the MVP™ 526P will display **CHAUVET** and model information.
 3. The display will then self-validate and load the last configuration setting.
- You can operate the MVP™ 526P using the MVP™ 526P software or by using the front panel.

Sample System Setup

Following is an example of a simple system setup. The diagram uses video sources from a PC and a DVD player. Both of these are connected to the MVP™ 526P Signal Processor. The MVP™ 526P is then connected to the MVP™ Driver, which is then connected, via etherCON to the panels.



Basic Software Setup

Using a PC as your remote control requires you to install driver software.

Follow the steps below to get started:

1. Power and connect system as illustrated in *Sample System Setup*.
2. Install the software and drivers to your PC..
3. Open the software and locate the **Communication** Panel.
4. Select the **ScanDev** button (This will automatically scan your pc for usable devices).
5. Select the **OpenCom** button .

For detailed information and instructions, refer to the *MVP™ 526P Signal Processor User Manual*.

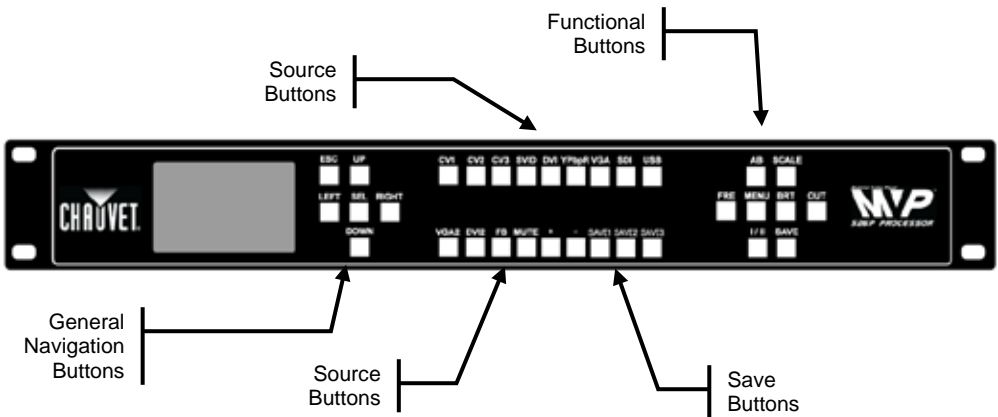
Front Panel Keyboard Operation

You can use the keyboard buttons on the front panel to locally control/operate the MVP™ 526P Signal Processor.

The following sections provide a summary of the functionality available to you by using the front panel keyboard. For detailed information and instructions, refer to the *MVP™ 526P Signal Processor User Manual*.

Front Panel Illustration

The MVP 526P has a display screen in which you can view menus, menu functions, and values as you navigate through the options. The keyboard buttons enable you to define parameters, as well as activate and transmit the signal sources you are outputting from the MVP™ 526P to your MVP™ video wall.



General Navigation Buttons

The following provides information on the general navigation buttons.

| Button | Function |
|---------|--|
| <SEL> | Selects the currently displayed menu, menu function, or value |
| <UP> | Press to display menu options higher on the menu list. |
| <DOWN> | Press to display menu options lower on the menu list. |
| <LEFT> | Press to display menu items to the left of the menu selected. |
| <RIGHT> | Press to display menu items to the right of the menu selected. |
| <ESC> | Press to exit from your current menu item selection. |

Source Buttons The MVP™ 526P supports 11 input sources and provides other functions to modify and control these sources. When you first run the MVP™ 526P, CV1 will be the default input source. Once running, you can select another input source. Also included with the Source buttons are the Save buttons that enable you to save custom configurations.

| Button | Function |
|-------------|--|
| <CV1> | Press to switch to the composite 1 BNC-type input |
| <CV2> | Press to switch to the composite 2 BNC-type input |
| <CV3> | Press to switch to the composite 3 BNC-type input |
| <SVID> | Press to switch to the SVideo input |
| <DV1> | Press to switch to the DVI input |
| <YPbPr> | Press to switch to the HD component inputs |
| <VGA> | Press to switch to the VGA input |
| <SDI> | Press to switch to the SDI input, compatible with HD/SD SDI |
| <USB> | Press to switch to the USB input |
| <VGA2> | Press to switch to the VGA2 input |
| <DV12> | Press to switch to the DV12 input |
| <FS> | Press to switch to Full Screen or Zoom View (use only when in single picture mode) |
| <MUTE> | Press to mute the sound. Press again to restore sound. |
| < + > < - > | Press to amplify or decrease the audio |
| < SAVE1> | User-defined mode 1. Press to save custom settings, which can be recalled. |
| <SAVE2> | User-defined mode 2. Press to save custom settings, which can be recalled. |
| <SAVE3> | User-defined mode 3. Press to save custom settings, which can be recalled. |

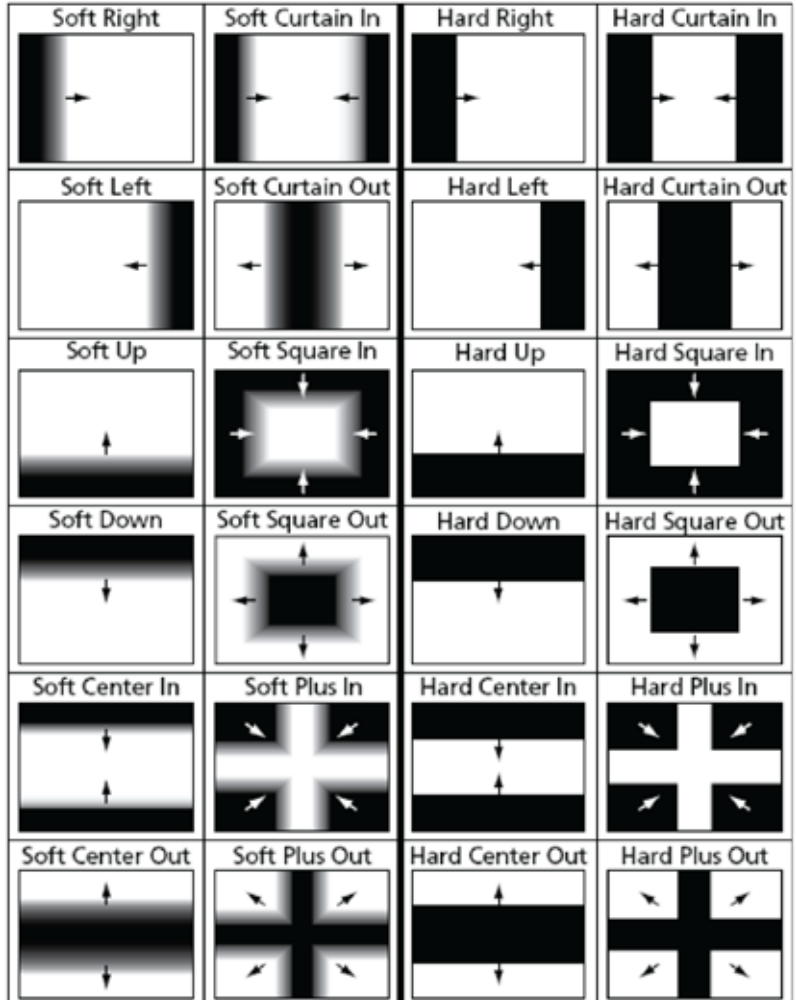
Functional Buttons

The series of keyboard buttons on the right-hand side of the front panel enables various functions and menus. Refer to the following table.

| Button | Function |
|---------|--|
| <MENU> | Press to go to the Main Menu, including product information. |
| <FRE> | Press to Freeze – Unfreeze (toggle) the video image |
| <AB> | Press to select and control transition effects. Refer to the <i>Using Seamless Transition Effects</i> section in this Guide. |
| <SCALE> | Press to scale the video image: Hsize à Vsize à HPOS à VPOS. Press the UP and DOWN buttons to select the scale size. |
| <BRT> | Press to adjust brightness or contrast. Select the applicable menu and press the UP and DOWN buttons to adjust brightness or contrast. |
| <OUT> | Press to select the output format. Press the Up and Down buttons to select the specific output format. |
| <I/II> | Press to select either single or dual channel. |
| <SAVE> | Press to save a current configuration (Save1, Save2, or Save3). |

Using Seamless Transition Effects

The MVP™ 526P provides multiple transition (sometimes referred to as “switch”) effects. You can use the front panel keyboard buttons or the software to select and control each of the transitions. Below are illustrations of the various transitions available.



1

Seamless Transition Effects — Using the Front Panel Keyboard

To specify a transition effect and define how that transition will display:

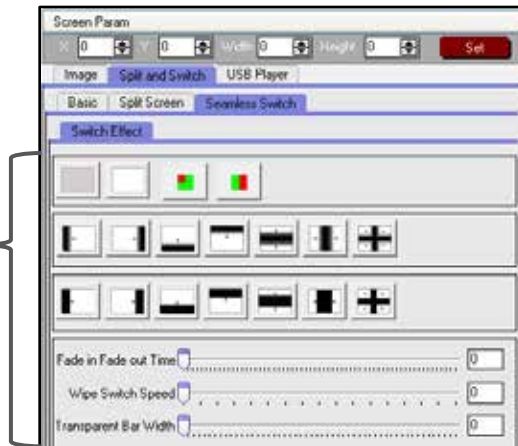
1. Press the **<AB>** button.
2. Press the **<LEFT>** or **<RIGHT>** buttons to display the transition effects menu.
3. Press the **<SEL>** button to select that transition's menu.
 - a. When you select the transition menu, you must then select how that transition will display, such as fade in-fade out delay.
 - b. To review the transition effect, press the applicable keyboard button associated with the input source to which you are applying the transition.

Seamless Transition Effects — Using the MVP™ 526P Software

When specifying transition effects using the MVP™ 526P software:

1. Select the **Screen Parameters** menu. The **Screen Param** window displays:

Transition effect icon list



2. From the **Screen Param** window, select the **Split and Switch** tab à **Seamless Switch** tab à **Switch Effect** tab.
3. The **transition effect icon** list displays.
4. Select a **transition effect icon** from the displayed list.
5. Click **Set** to select the transition effect you want to use.

For more detailed information and instructions, refer to the *MVP™ 526P Signal Processor User Manual*.

Using PIP, POP, and PBP

The MVP™ 526P provides split-screen PIP, POP, or PBP. You can control any of these functions using either the front panel keyboard buttons or the MVP™ 526P Signal Processor software. This functionality is also sometimes referred to as “mosaic” because of the picture tiling and multiple picture fragments that can be displayed on the video wall or a defined space within the video wall.

You must define either a horizontal or vertical size, and, if applicable, define an X,Y position.

Using the Front Panel Keyboard

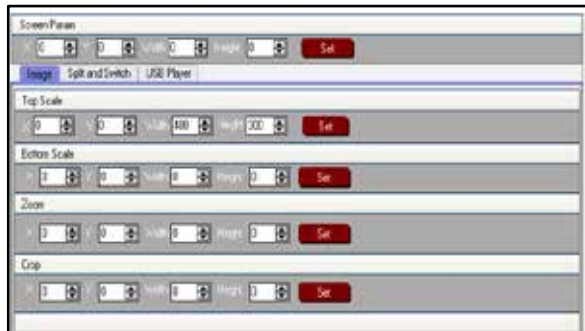
To define and control split screen using the keyboard buttons:

1. Press **<Menu>** to display the Main Menu.
2. Press the **<LEFT>** or **<RIGHT>** button to display the MOSAIC menu.
3. Press **<SEL>** to select a function.
4. Press **<LEFT>** or **<RIGHT>** to define **Horizontal Mosaic** or **Vertical Mosaic**.
5. Press **<SEL>** to select.

Image Scaling

To define split screen using the software:

1. Select the **Screen Parameters** menu. The **Screen Param** window displays.



2. From the **Screen Param** window, select the **Image** tab. The Slip Screen mode icons display.
3. Input desired scale values.
4. Click **Set** to select.

For more detailed information and instructions, refer to the *MVP™ 526P Signal Processor User Manual*.

Contact Us

World Headquarters

CHAUVET®

General Information

Address: 5200 NW 108th Avenue
Sunrise, FL 33351
Voice: (954) 929-1115
Fax: (954) 929-5560
Toll free: (800) 762-1084

Technical Support

Voice: (954) 929-1115 (Press 4)
Fax: (954) 756-8015
Email: tech@chauvetlighting.com

World Wide Web

www.chauvetlighting.com

United Kingdom and Ireland

CHAUVET® Europe Ltd.

General Information

Address: Unit 1C
Brookhill Road Industrial Estate
Pinxton, Nottingham, UK
NG16 6NT
Voice: +44 (0)1773 511115
Fax: +44 (0)1773 511110

Technical Support

Email: uktech@chauvetlighting.com

World Wide Web

www.chauvetlighting.co.uk

Outside the US, United Kingdom, or Ireland, contact your distributor of record. Follow their instructions to request support or to return a product. Visit our Web site for contact details.

MPV™ 526P Signal Processor QRG – Rev. 15

© Copyright 2011 CHAUVET®

All rights reserved.

Printed in the P. R. C.