



CHAUVET®

Value • Innovation • Performance

Precision Series

ZX-20LQ



User Guide

Please read these instructions carefully before use

World-wide Headquarters:

3000 North 29th Ct.
Hollywood, Florida, USA 33020

Tel: +1-954-929-1115 Fax: +1-954-929-5560

www.ChauvetLighting.com

On Front:

- Effect Mirror
- Lens

On Bottom:

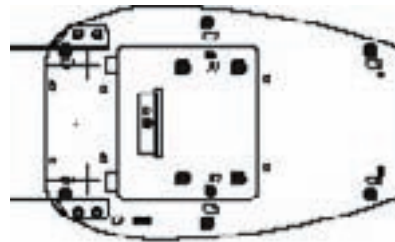
- Function Switch
- Fuse Holder
- Fan

On Back:

- Bracket Screws
- Cable to Head
- Gobo Holder
- Lamp Replacement Cover



Front View



Rear View

- A: ACCESS TO INTERNAL LAMP
- B: ACCESS TO GOBO
- C: REMOVE BOTTOM PLATE

Congratulations on the purchase of your new CHAUVET lighting effect. We are confident you will enjoy many trouble free hours with this unit. To assist with the care and use of the product we have prepared this short guide.

Operation

Before connecting this unit to the mains power supply for the first time you must first install the lamps. (See 'Replacing Lamps' for details).

This lighting effect has been designed to function on a mains power supply of either 120V~60Hz or 230V~50Hz and has been fitted with a suitable power plug for use with your local voltage. Check the label and voltage selector switch (if fitted) on the unit and the power plug for the correct voltage.

When connected to the mains power supply the unit should illuminate. This effect has three modes of operation - static, continuous rotation or sound activated. There is a selector switch on the bottom which determines the mode (see fig.1).

Due to the high operating temperature of halogen lamps it is advisable that the effect be used in well ventilated areas taking care not to obstruct the air vents. After use allow time to 'cool' for safety and to ensure lamp life before moving or touching.

The duty cycle for this effect should be no more than 15 minutes on then 15 minutes off.

Use in a well-ventilated area without obstruction to air vents or fan.

Features

Removeable Head -To use the ZX-20LQ as a projector, the head may be removed. In order to remove the head, simply unscrew the four screws holding the head bracket to the body of the unit and unplug the connecting cable.

Function - The ZX-20LQ offers the user a choice of either static, continuous rotation or beat activation. This feature is controlled by the 3 position switch on the bottom of the unit (located just above the fan). This controls only the effects mirror.

Effect - The ZX-20LQ comes with an oil wheel. This effect can be changed to a water effect by inserting the supplied glass water effect gobo. To insert the gobo, unscrew the gobo holder on the bottom of the unit and slide the water effect gobo into the holder. Replace the holder in the unit and screw in tightly.

Gobo - The ZX-20LQ is supplied with 3 interchangeable gobos. These gobos are superimposed on the 29 dichroic oil wheel effects. To change/insert a gobo, remove the screw on the bottom of the unit securing the gobo holder. Remove the gobo and replace with the desired gobo. Replace the gobo holder in the ZX-20LQ and secure the screw tightly. The ZX-20LQ will accept custom gobos. The gobo has a diameter of 41 mm. The image area has a diameter of 33 mm.

Installation / Mounting

Although this unit can be used in an upright position, it is recommended that, for safety purposes, your lighting effect be properly mounted using a suitable hanging clamp and safety cable. CHAUVET offers a range of items, which are ideal for safe mounting.

Replacing Lamps

1. Disconnect from main power supply before attempting to replace either lamps or fuse.
2. Ensure that the unit is sufficiently cool, before removing blown lamps.
3. Never touch new lamps with your fingers; use a tissue or a cloth.

In order to replace the lamp, disconnect from main power supply first, and unscrew the lamp replacement cover, which is highlighted on the diagram (fig.1). Only use the appropriately rated lamps as use of any other lamp type may cause the unit to be non-operational.

Due to the nature of halogen lamps it is vitally important that you do not touch the new replacement lamp with your fingers, as this will reduce lamp life considerably. Once again a tissue or cloth can be used for fitting the replacement lamp.

Finally before using, check that the lamp is housed correctly in the lamp holder and that the lamp replacement cover has been screwed back into place.

If after replacement of the lamp, the unit is still not working then please contact CHAUVET for servicing.

Replacing Fuses

If the unit does not function at all when connected to the main power supply i.e. the mechanism does not spin. Then it is highly likely that the fuse has blown.

Disconnect from main power supply before attempting to replace either lamps or fuse.

In order to replace the fuse, disconnect from the main power supply first, and then unscrew the fuseholder cover to reveal the fuse. The unit has a label attached which indicates the correct fuse rating and you will also find this listed as part of the specifications for the unit later in this guide. It is most important that replacement fuses are of the correct rating. Failure to use the correct fuse could damage the lighting effect beyond economic repair.

The fuse should simply be placed inside the holder and the screw cap replaced, when this is done connect to the main power supply to check. If the unit is still not working then please contact CHAUVET for servicing.

Cleaning

The most important part of your lighting effect to keep clean is the lens as it allows the light output to transmit. This should be cleaned with a soft damp cloth. The body of the unit may also be cleaned in the same way. We recommend internal cleaning be carried out by a fully qualified technician.

Maintenance & Servicing

Work on internal parts should be carried out by a qualified technician. Removal of covers other than the front to replace lamp or effect dish, or the fuseholder is considered a breach of warranty and will not be covered under any such agreement unless authorized first by the company.

Troubleshooting

- If the unit is not functional – check main power supply is 'on' and check fuses.
- If the unit is functional but lamp does not light - lamp may require replacing.
- If the unit is not moving to the music check the beat-activation adjustment (when applicable)
- If after trying this solution you still have a problem contact CHAUVET.

Contact Chauvet

USA

Technical Assistance: 1-800-762-1084 (954) 929-1115

E-Mail tech@chauvetlighting.com

Caution

Do not obstruct the air vents or fan.

Do not touch unit or lamps while hot.

Never put any objects through the air grill on the top of the unit.

No user serviceable parts inside, please refer to CHAUVET for service.

Power Connections

The unit is supplied with a power plug appropriate to its voltage and destination. Should any other connections be required they must be carried out with the following configuration.

Earth = Green/Yellow cable

Neutral = Blue cable

Live = Brown cable

In the USA & Europe, it is required that all plugs are 3-pin type i.e. with Earth/Ground connection. In the UK, it is required that all mains plugs are fitted with 5A fuses.

Technical Specifications

Power: 110V, 60 Hz or 230V, 50 HZ

Fuse: 110V - 2A 125V

220V - 1A 250V

Lamp: 15V 150W, EFR5 (500 hours)

Dim: 18.5 in x 7 in x 7 in

470 mm x 178 mm x 178 mm

Weight: 6.5 lbs

2.95 kg

User Information (Please complete for your records)

Date Purchased: / /

Serial No. _____

Dealer Stamp

Model: Precision Series ZX-20LQ